

LEGEND

NRHP Eligible Historic Buildings

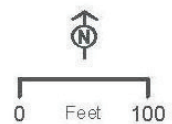
- No Effect
- No Adverse
- Adverse Effect

Archaeological Sites

- Listed on NRHP
- Eligible
- Eligible
- Ineligible
- Parcel Boundary

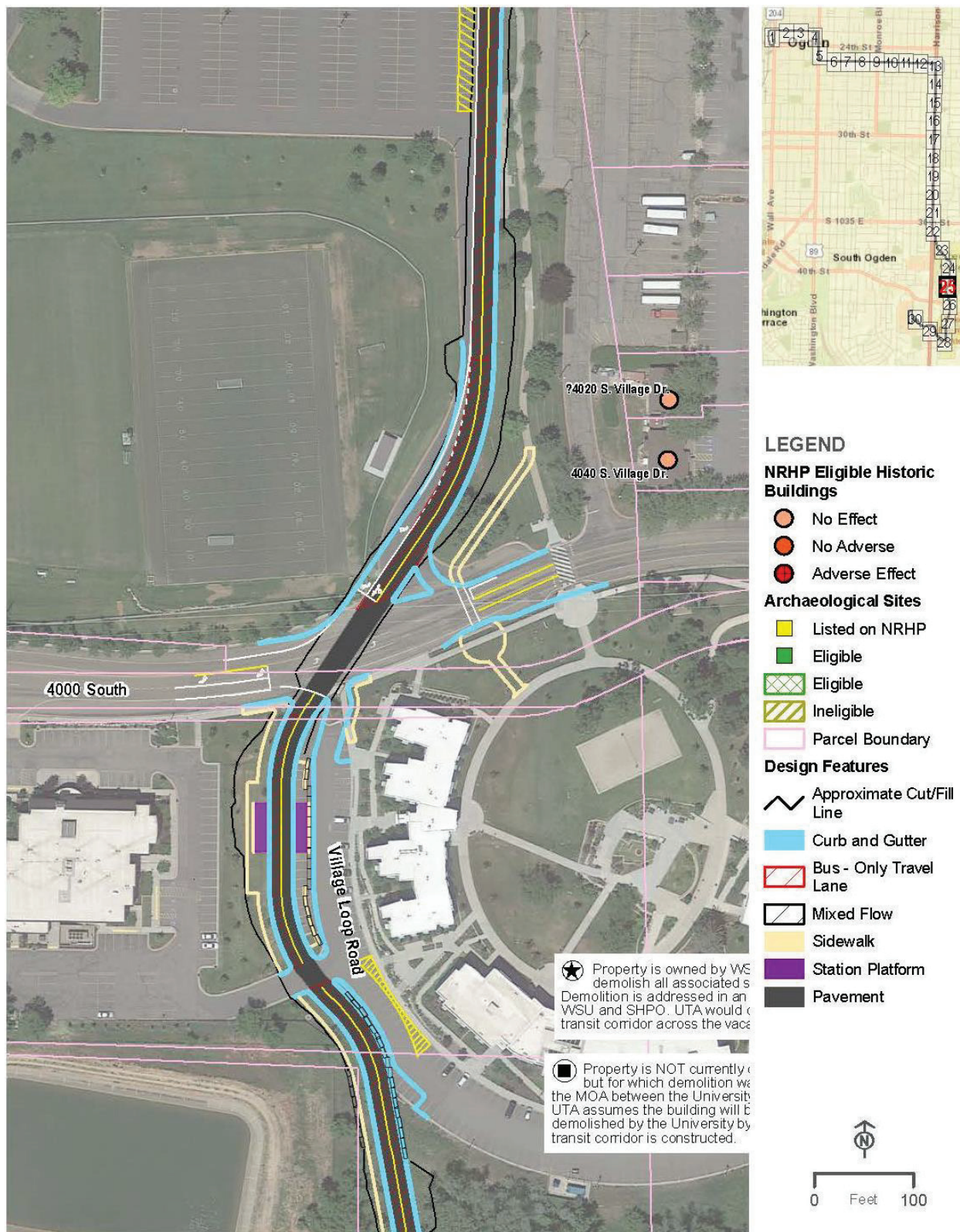
Design Features

- ~ Approximate Cut/Fill Line
- Curb and Gutter
- Bus - Only Travel Lane
- Mixed Flow
- Sidewalk
- Station Platform
- Pavement



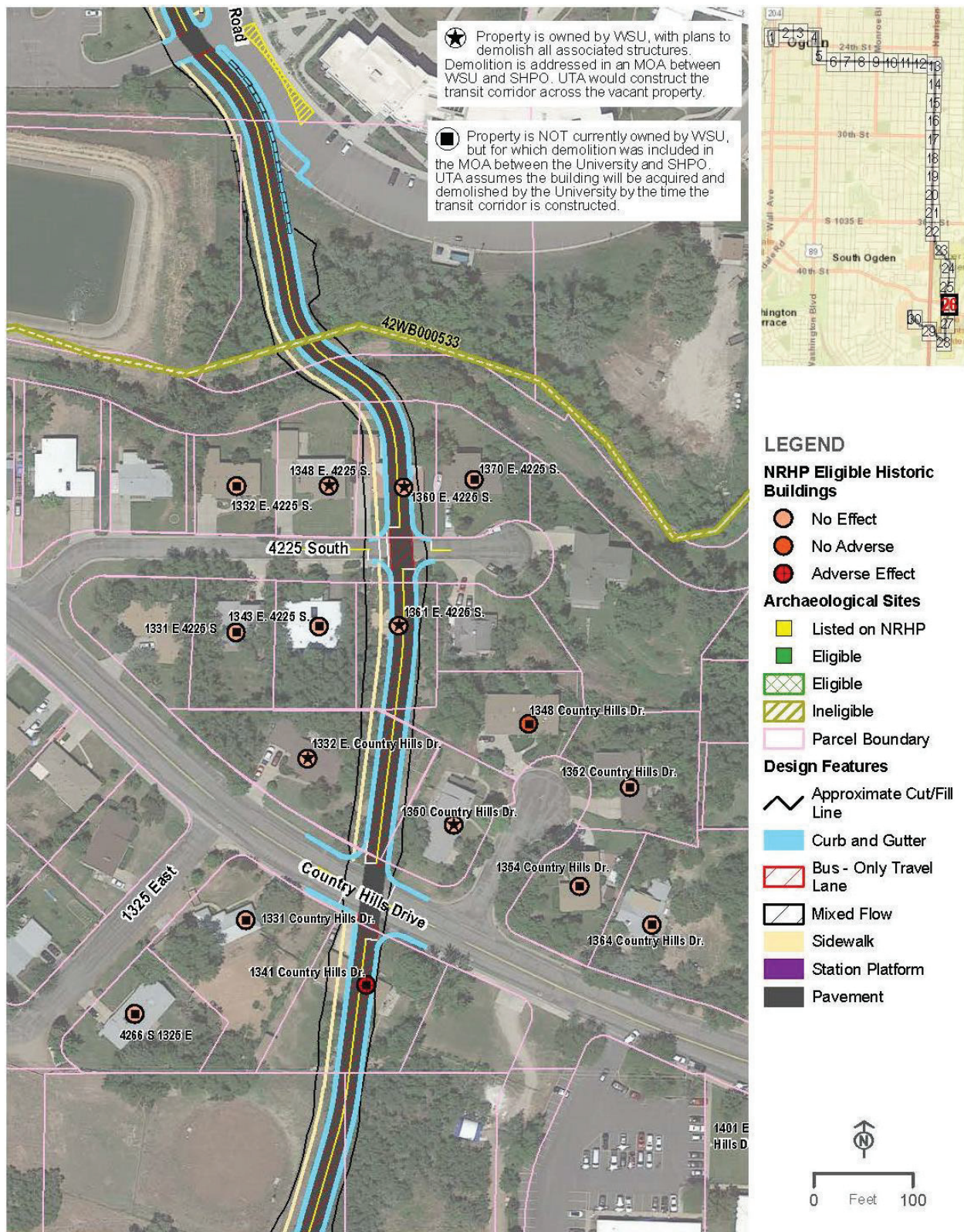
OGDEN/WEBER STATE UNIVERSITY TRANSIT PROJECT HISTORIC PROPERTIES

FIGURE 24 OF 30



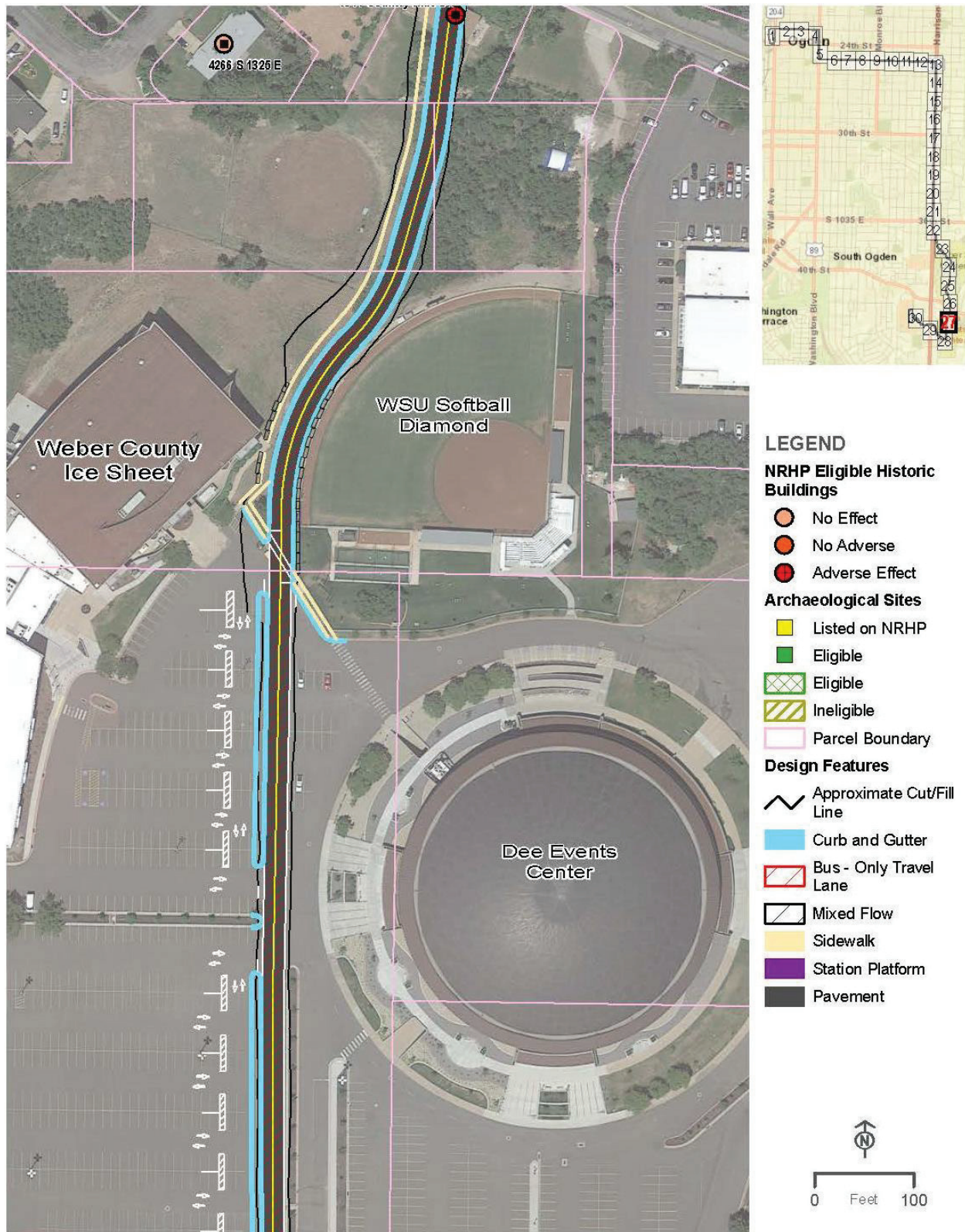
OGDEN/WEBER STATE UNIVERSITY TRANSIT PROJECT HISTORIC PROPERTIES

FIGURE 25 OF 30



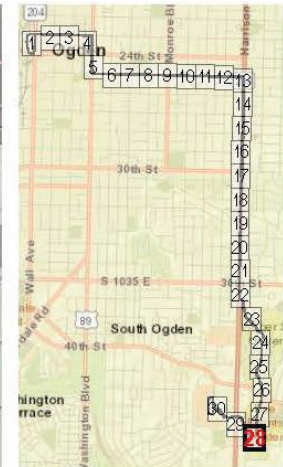
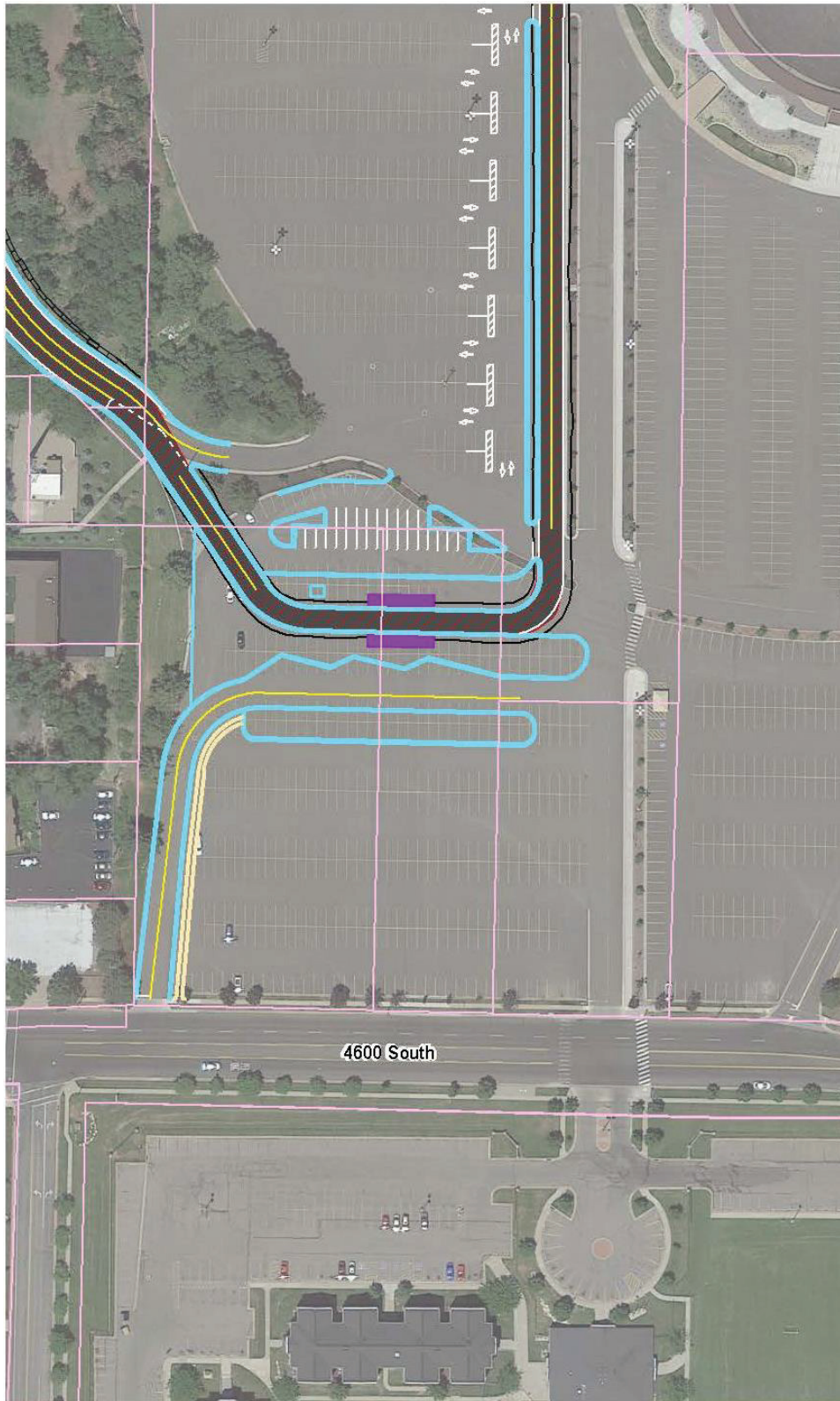
OGDEN/WEBER STATE UNIVERSITY TRANSIT PROJECT HISTORIC PROPERTIES

FIGURE 26 OF 30



OGDEN/WEBER STATE UNIVERSITY TRANSIT PROJECT
HISTORIC PROPERTIES

FIGURE 27 OF 30



LEGEND

NRHP Eligible Historic Buildings

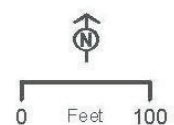
- No Effect
- No Adverse
- Adverse Effect

Archaeological Sites

- Listed on NRHP
- Eligible
- Eligible
- Ineligible
- Parcel Boundary

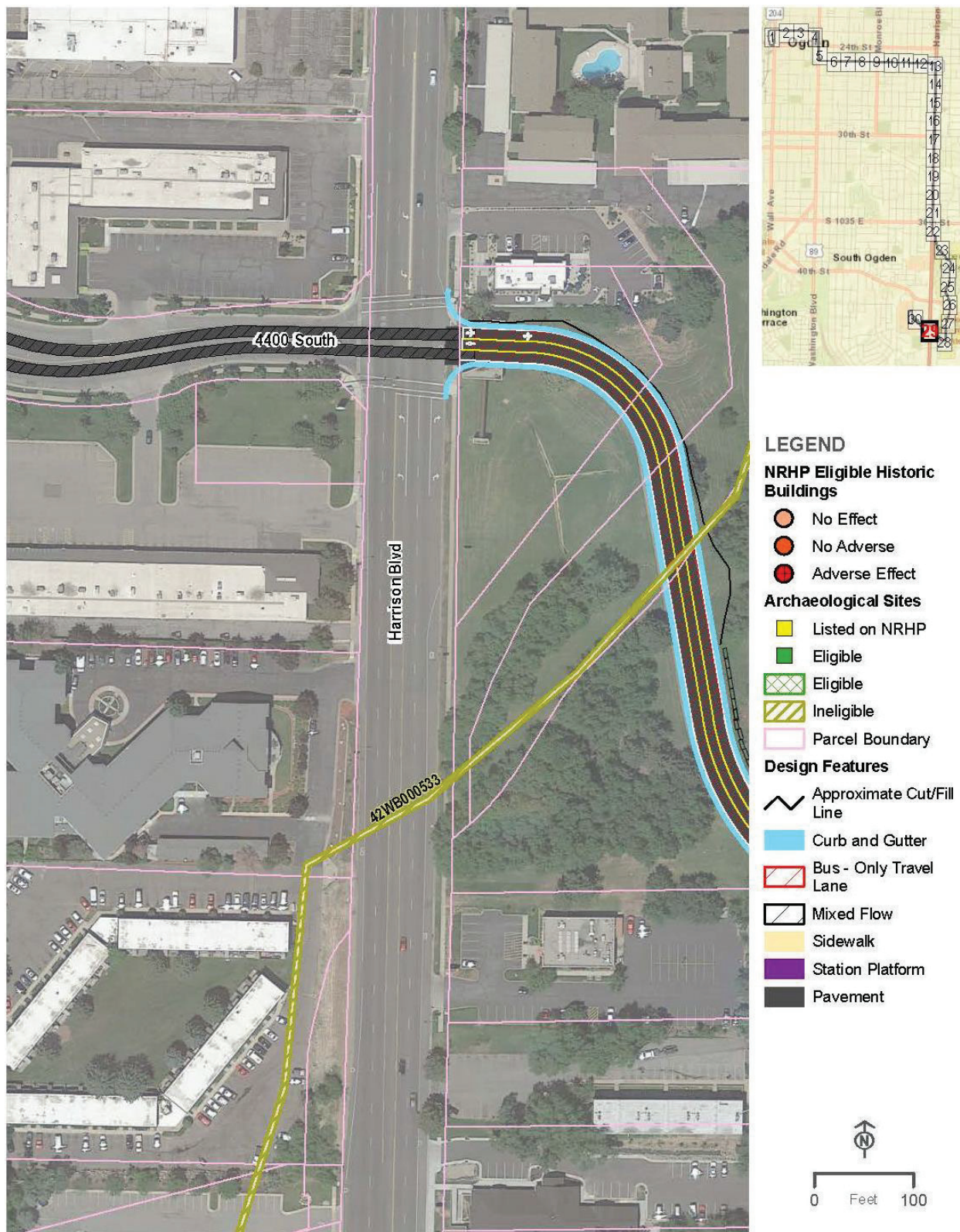
Design Features

- ~ Approximate Cut/Fill Line
- Curb and Gutter
- Bus - Only Travel Lane
- Mixed Flow
- Sidewalk
- Station Platform
- Pavement



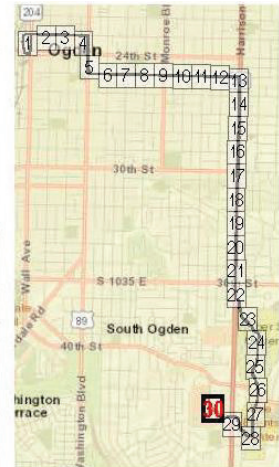
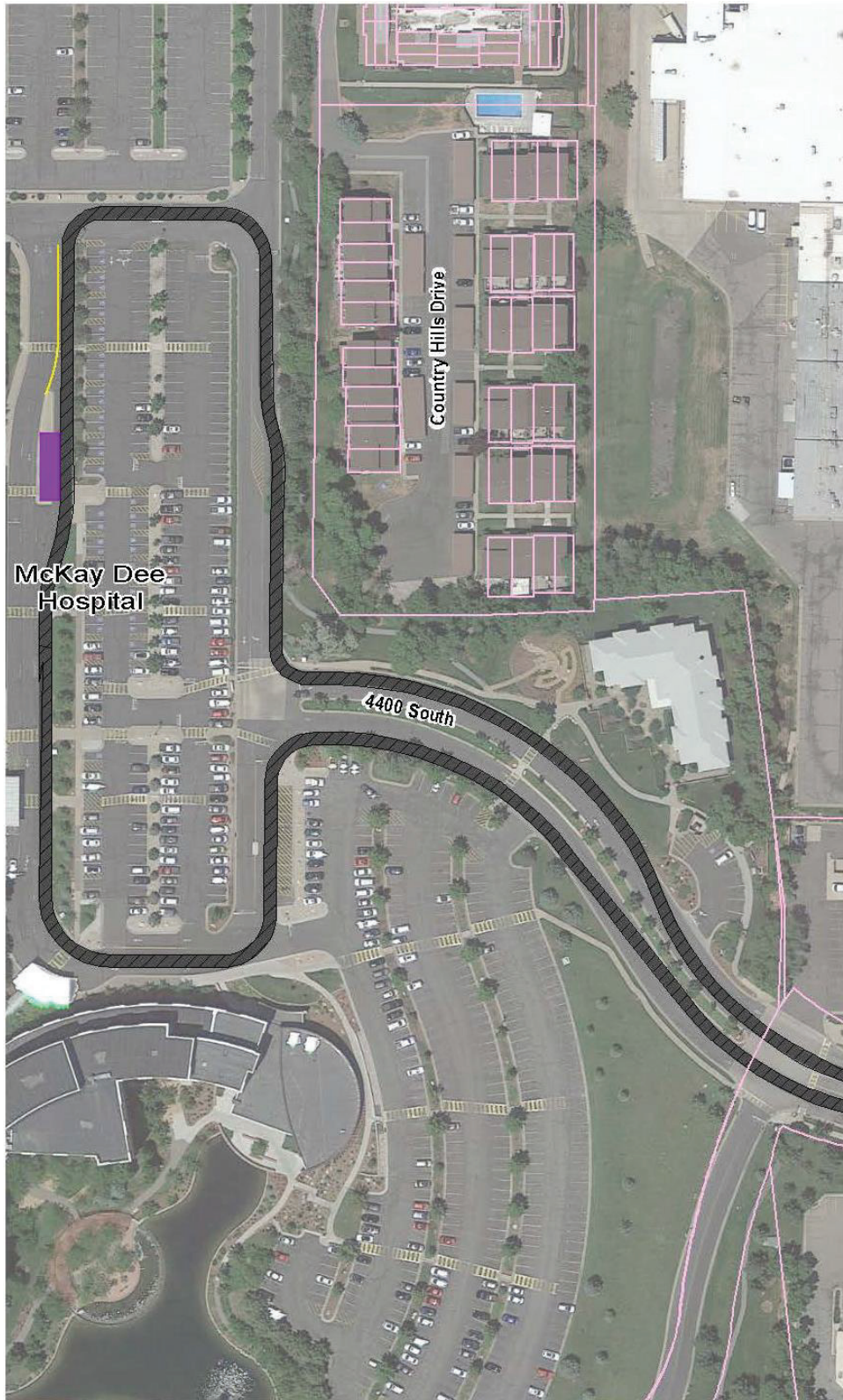
OGDEN/WEBER STATE UNIVERSITY TRANSIT PROJECT HISTORIC PROPERTIES

FIGURE 28 OF 30



OGDEN/WEBER STATE UNIVERSITY TRANSIT PROJECT
HISTORIC PROPERTIES

FIGURE 29 OF 30



LEGEND

NRHP Eligible Historic Buildings

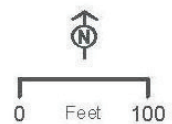
- No Effect
- No Adverse
- Adverse Effect

Archaeological Sites

- Listed on NRHP
- Eligible
- Eligible
- Ineligible
- Parcel Boundary

Design Features

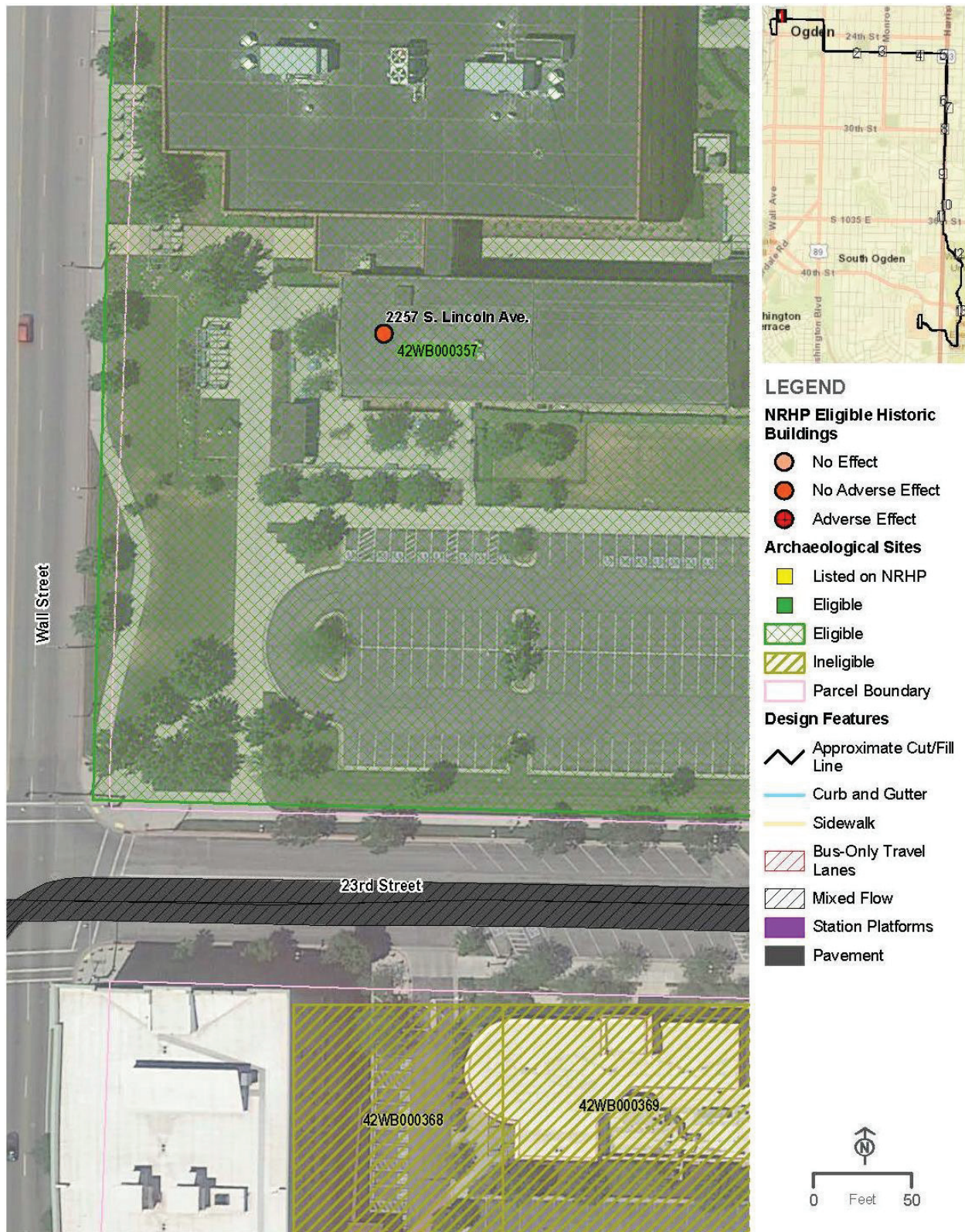
- Approximate Cut/Fill Line
- Curb and Gutter
- Bus - Only Travel Lane
- Mixed Flow
- Sidewalk
- Station Platform
- Pavement



OGDEN/WEBER STATE UNIVERSITY TRANSIT PROJECT HISTORIC PROPERTIES

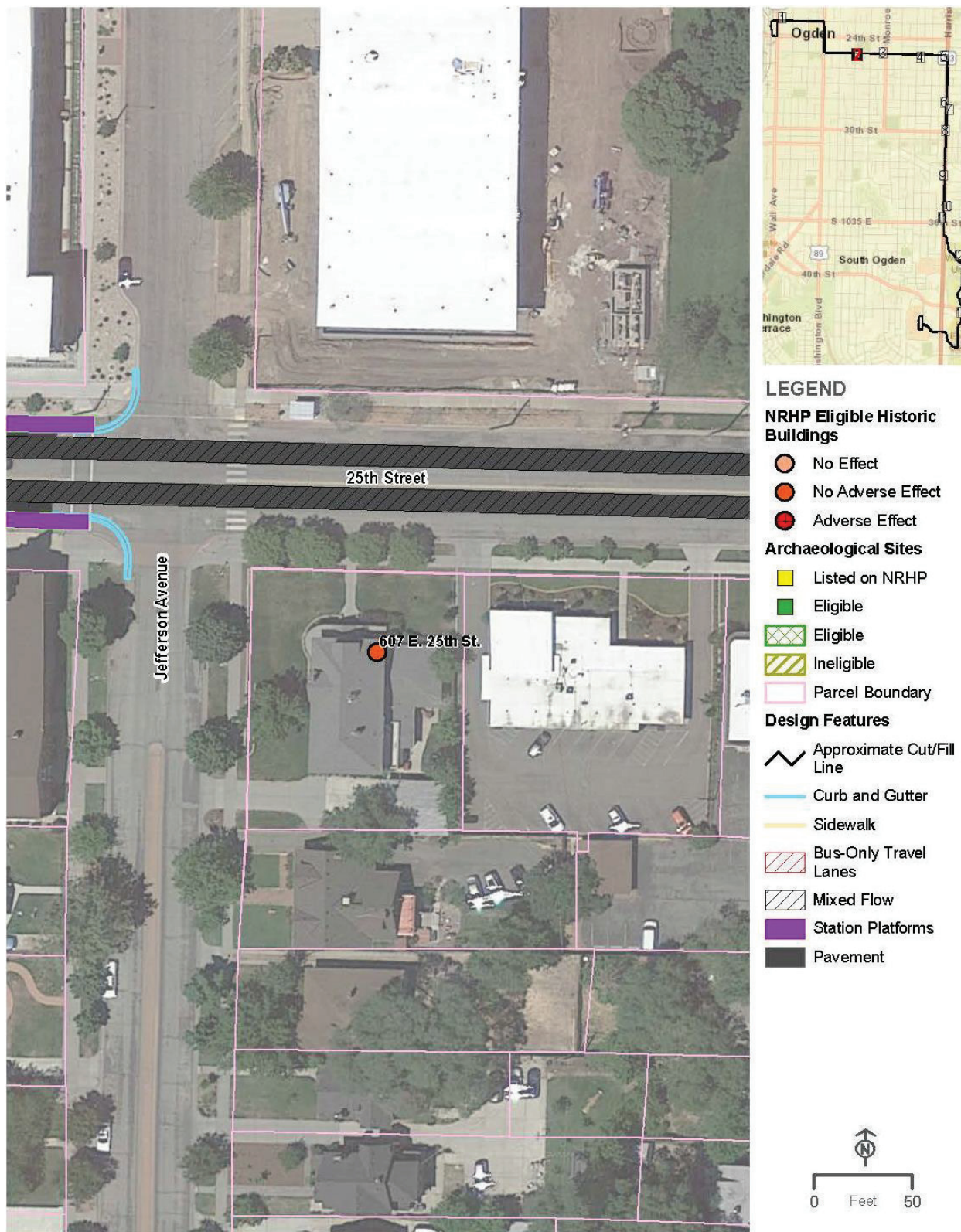
FIGURE 30 OF 30

Map Series 2 – Historic Properties Detail (set of 13)



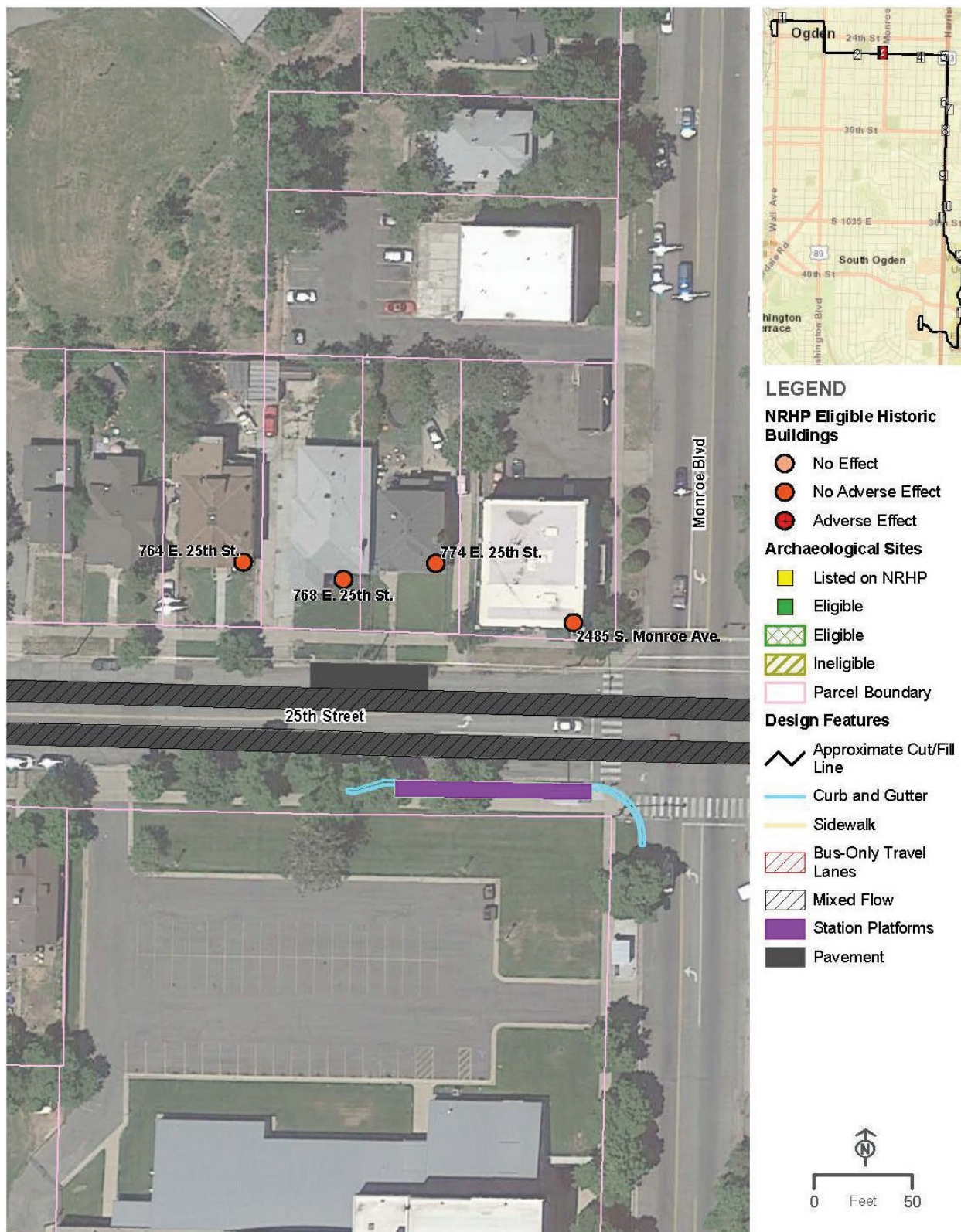
**OGDEN/WEBER STATE UNIVERSITY TRANSIT PROJECT
HISTORIC PROPERTIES (DETAIL)**

FIGURE 1 OF 13



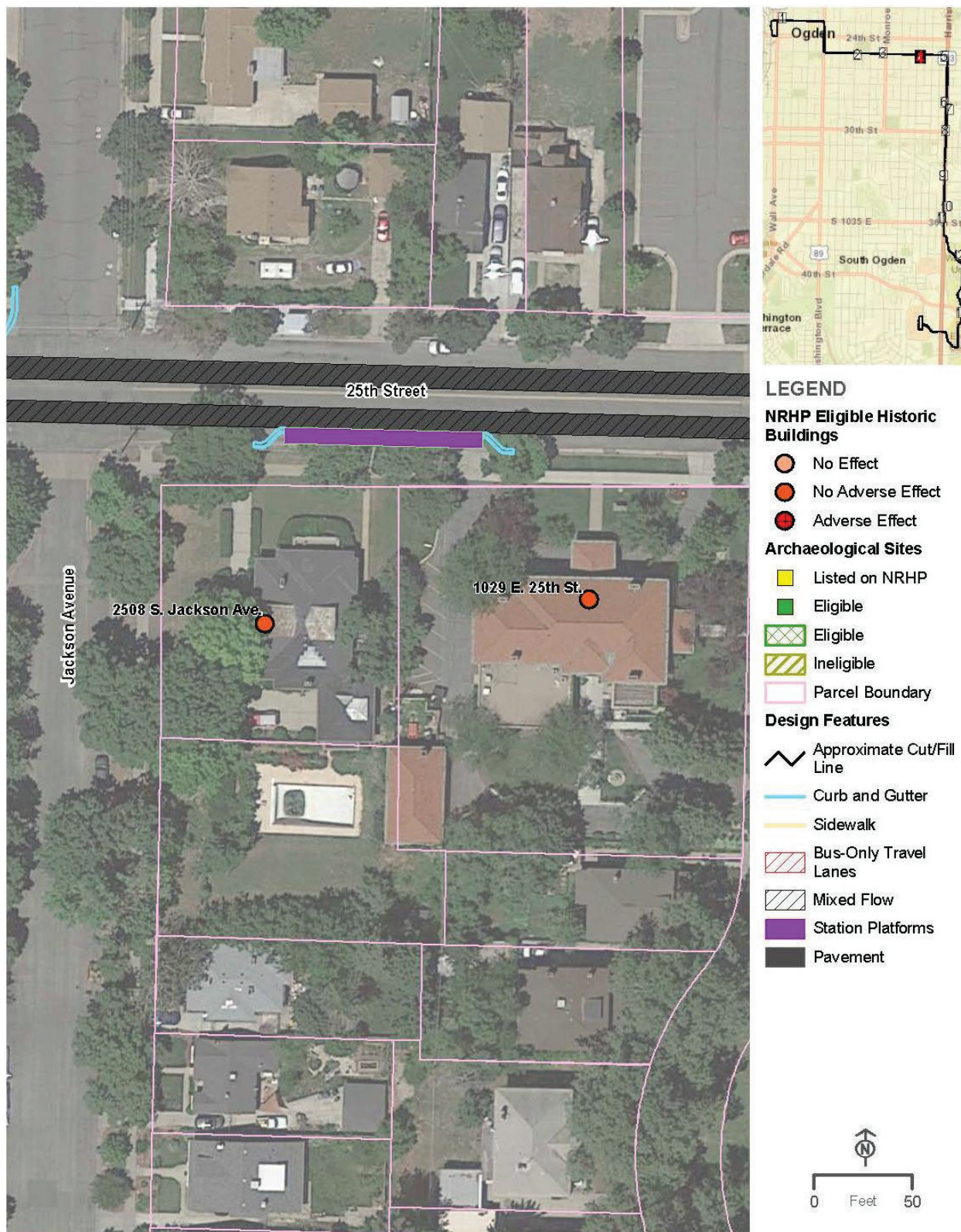
OGDEN/WEBER STATE UNIVERSITY TRANSIT PROJECT HISTORIC PROPERTIES (DETAIL)

FIGURE 2 OF 13



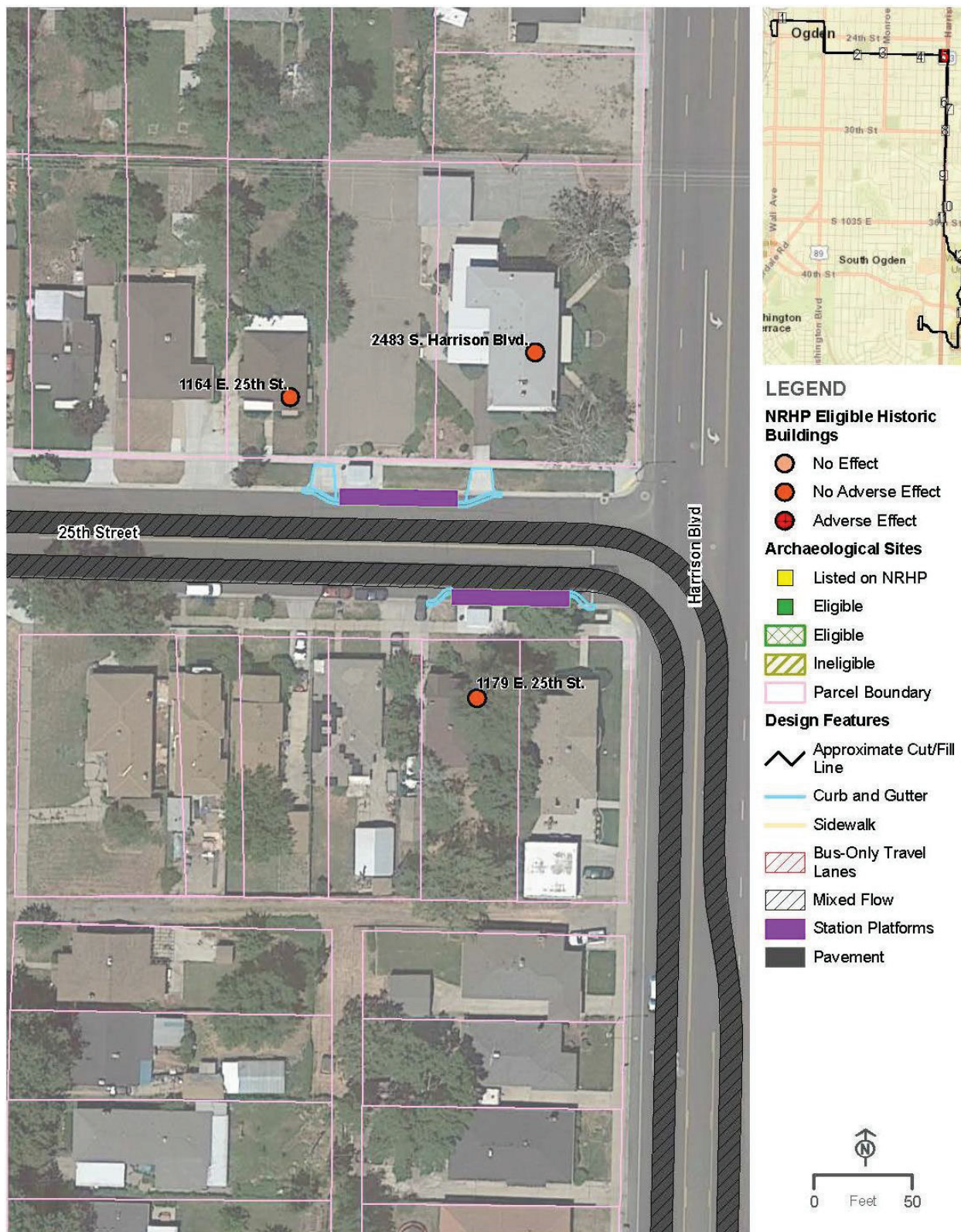
OGDEN/WEBER STATE UNIVERSITY TRANSIT PROJECT
HISTORIC PROPERTIES (DETAIL)

FIGURE 3 OF 13



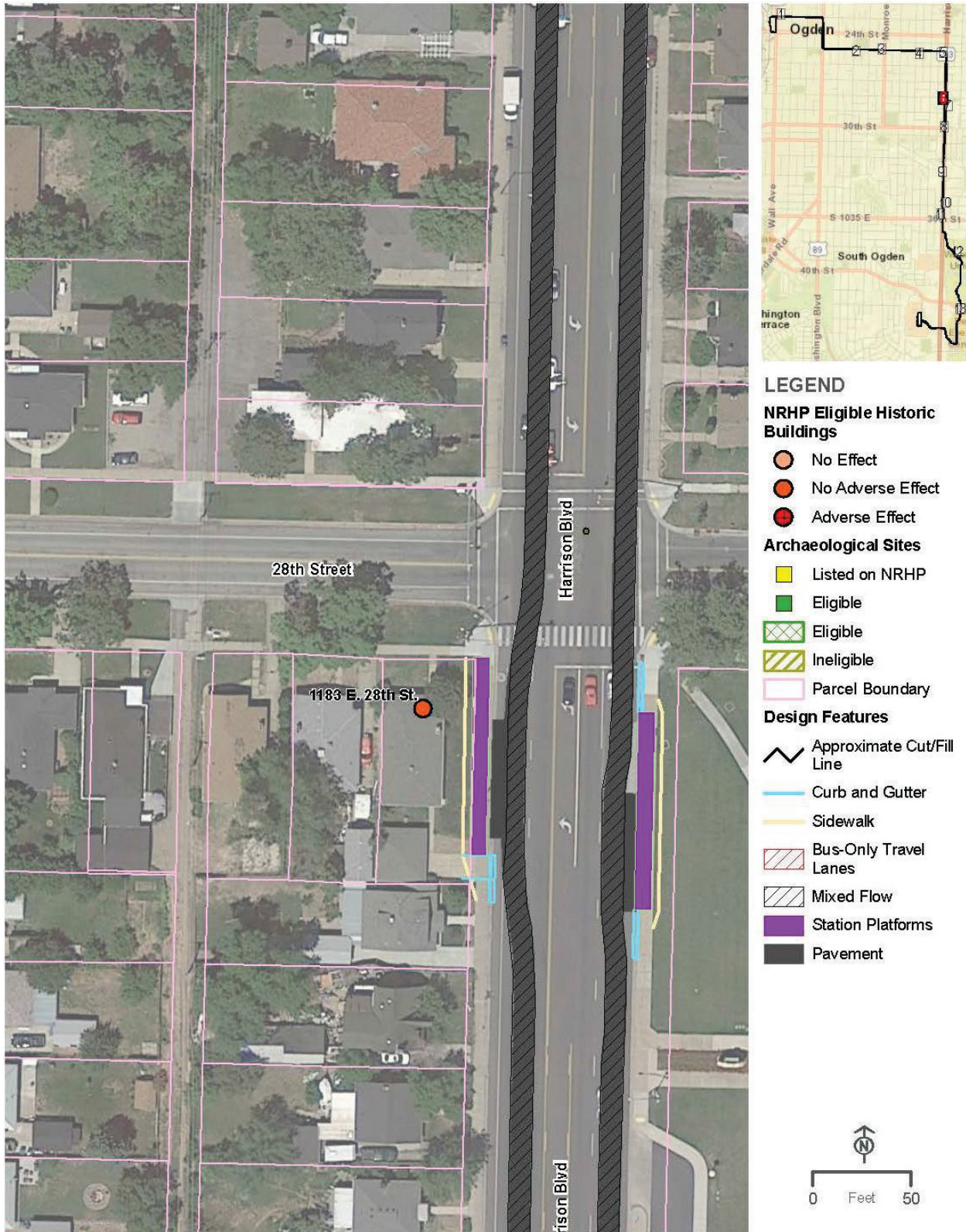
OGDEN/WEBER STATE UNIVERSITY TRANSIT PROJECT
HISTORIC PROPERTIES (DETAIL)

FIGURE 4 OF 13



OGDEN/WEBER STATE UNIVERSITY TRANSIT PROJECT
HISTORIC PROPERTIES (DETAIL)

FIGURE 5 OF 13



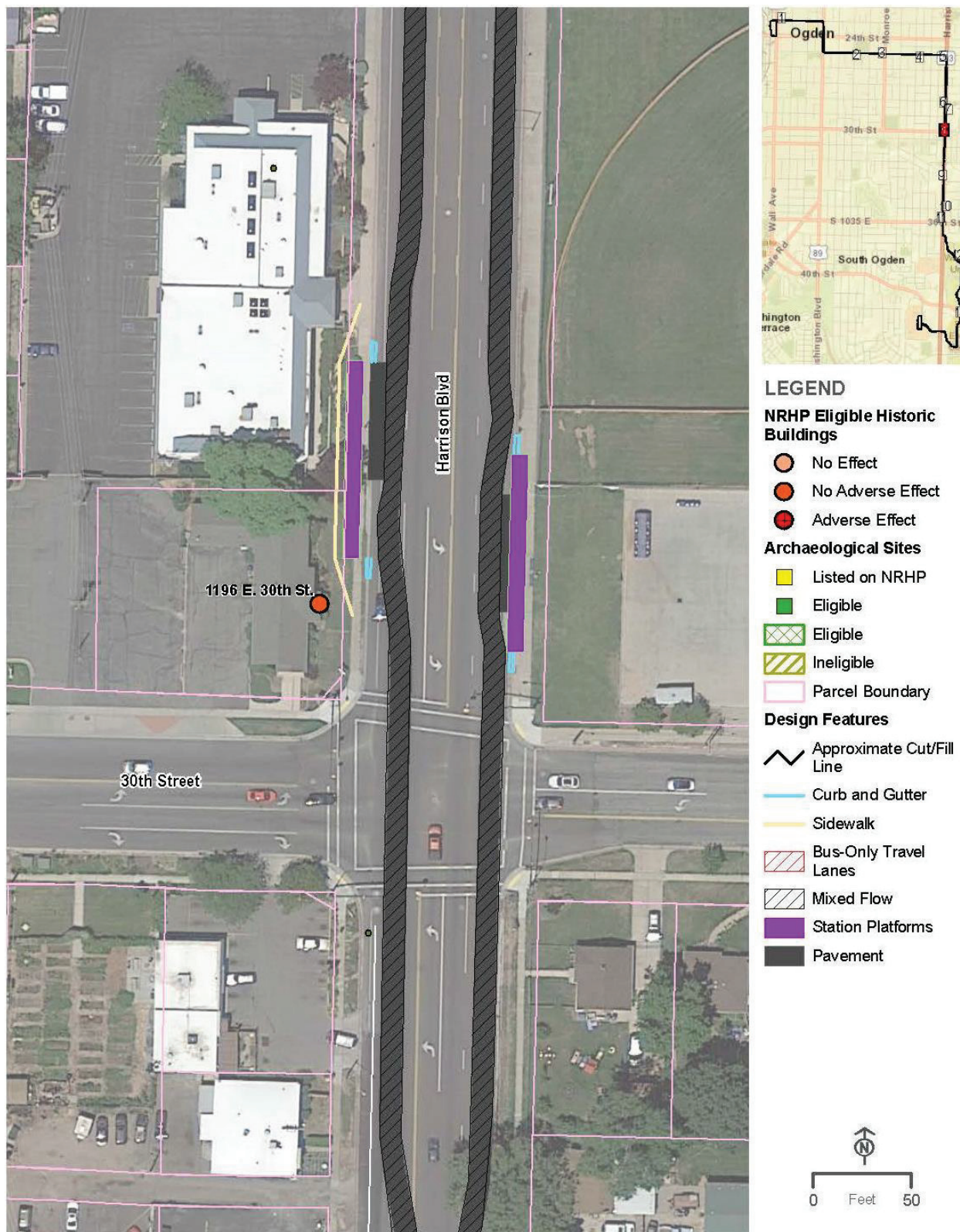
OGDEN/WEBER STATE UNIVERSITY TRANSIT PROJECT
HISTORIC PROPERTIES (DETAIL)

FIGURE 6 OF 13



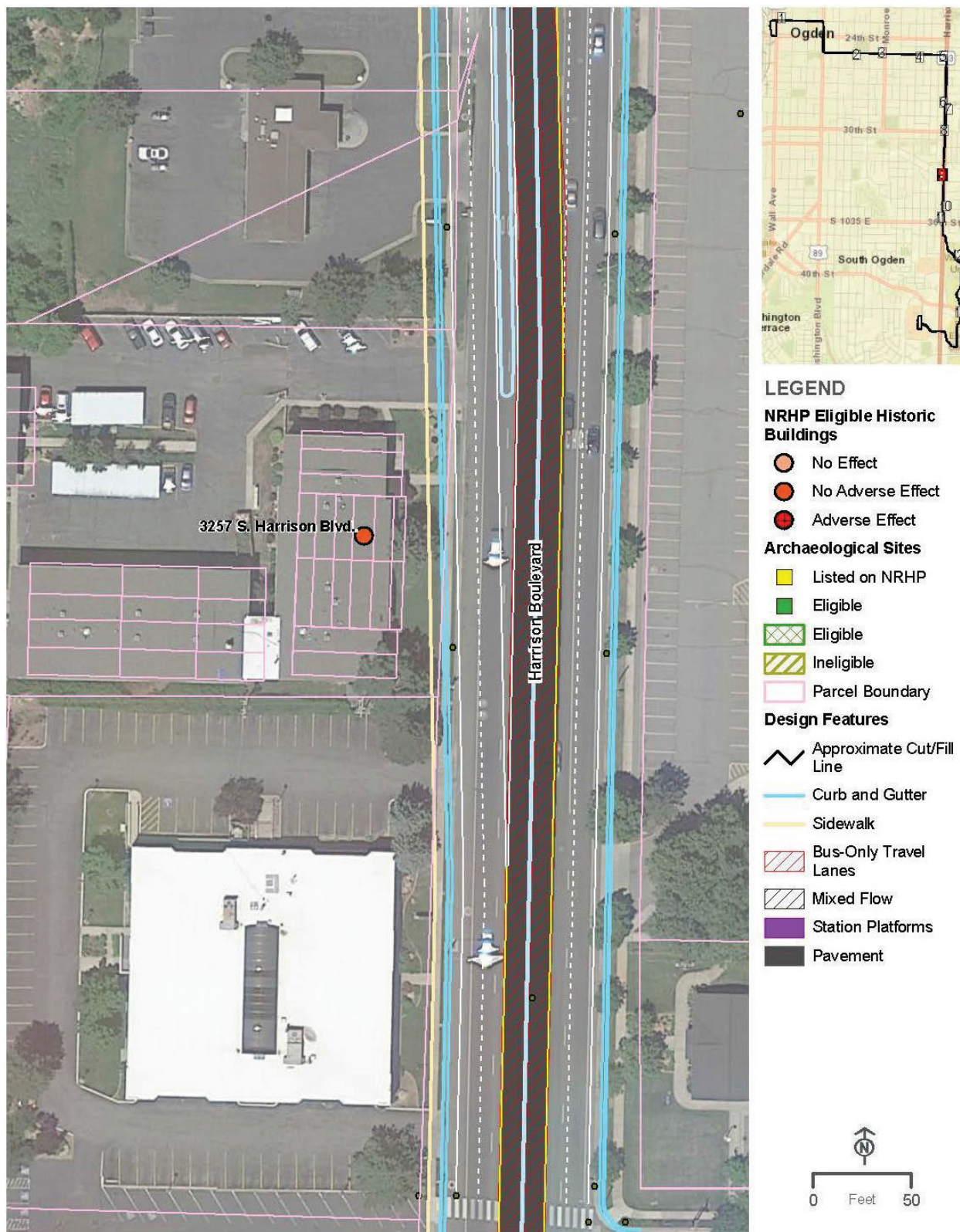
**OGDEN/WEBER STATE UNIVERSITY TRANSIT PROJECT
HISTORIC PROPERTIES (DETAIL)**

FIGURE 7 OF 13



OGDEN/WEBER STATE UNIVERSITY TRANSIT PROJECT
HISTORIC PROPERTIES (DETAIL)

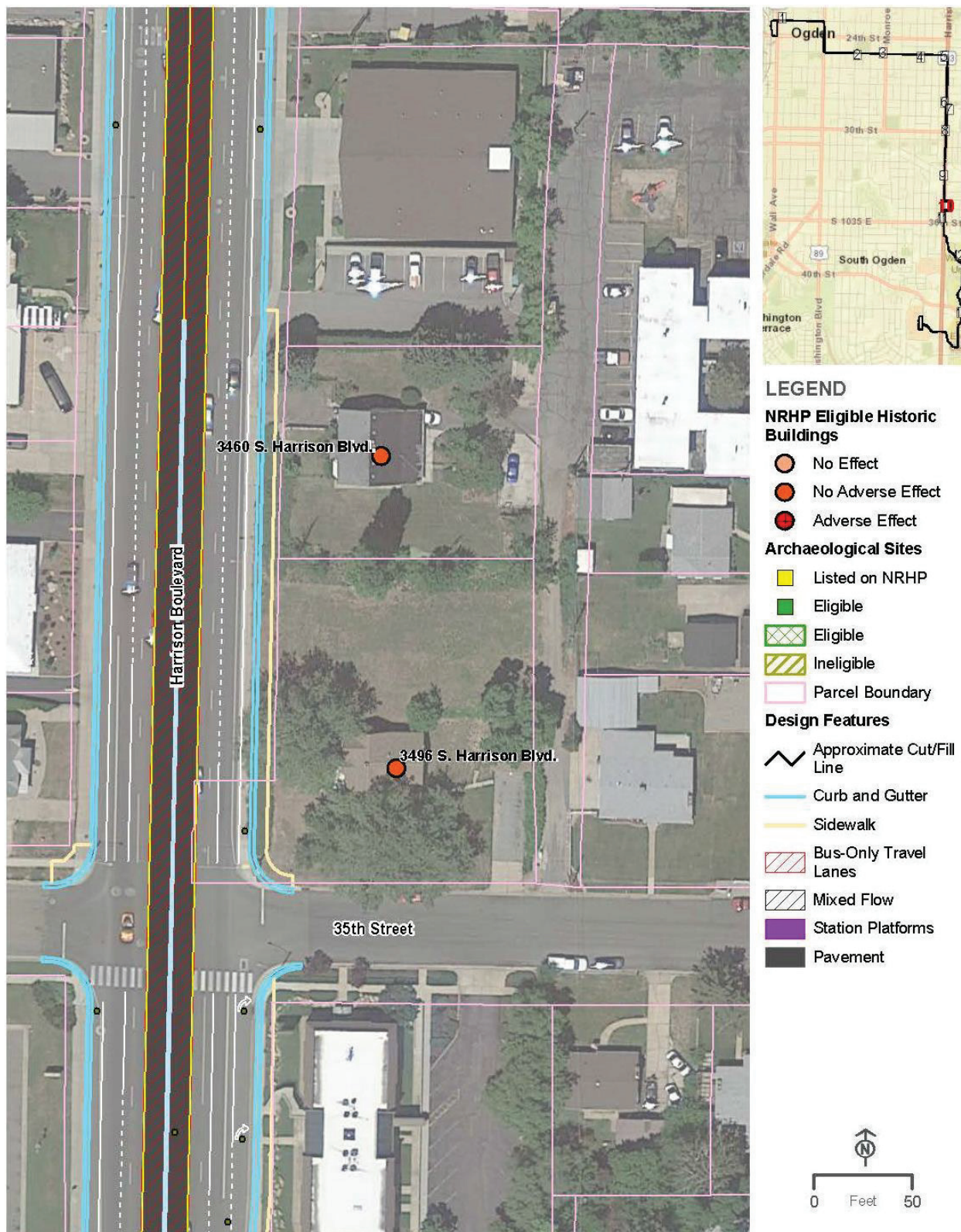
FIGURE 8 OF 13



OGDEN/WEBER STATE UNIVERSITY TRANSIT PROJECT
HISTORIC PROPERTIES (DETAIL)

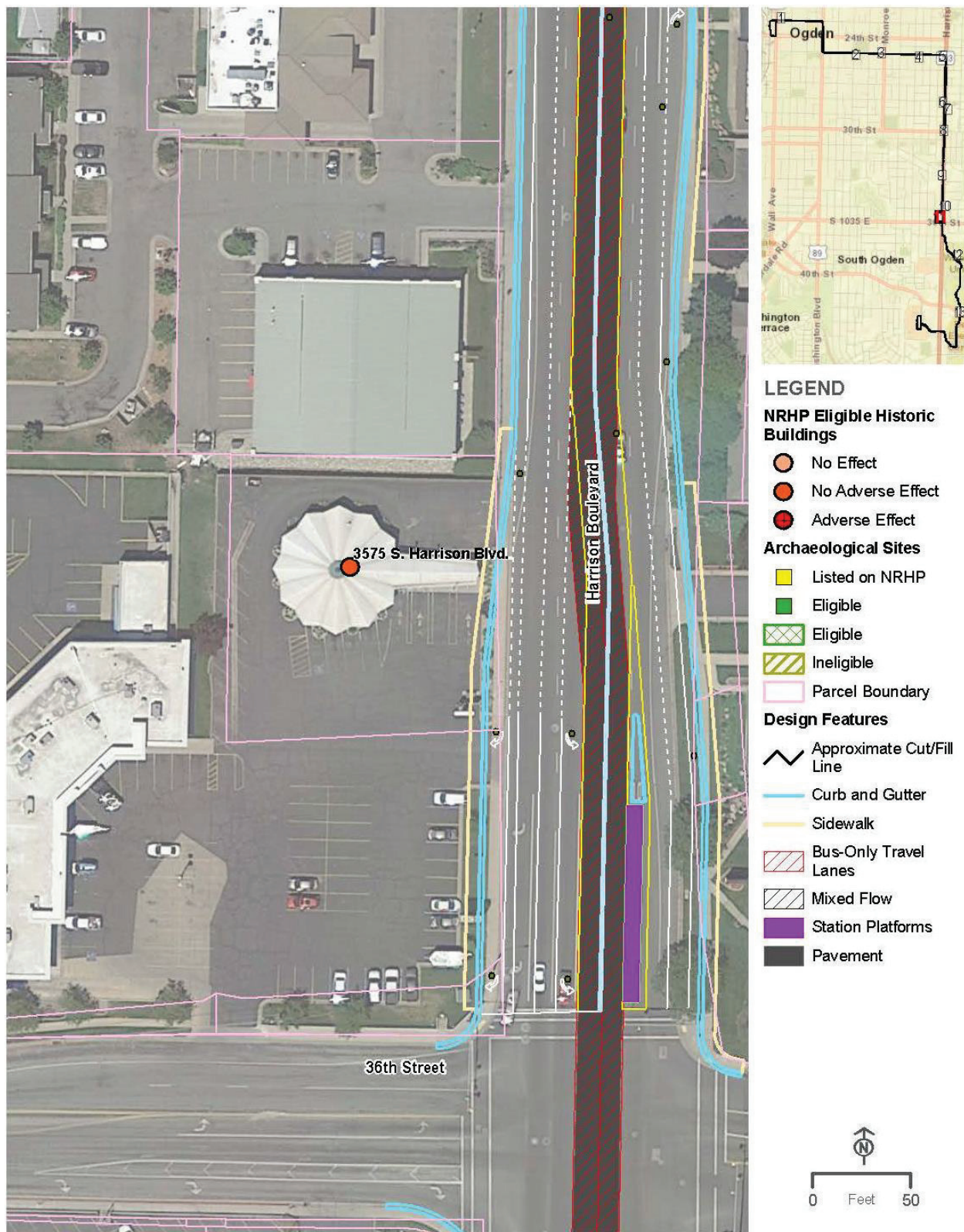
FIGURE 9 OF 13





OGDEN/WEBER STATE UNIVERSITY TRANSIT PROJECT
HISTORIC PROPERTIES (DETAIL)

FIGURE 10 OF 13



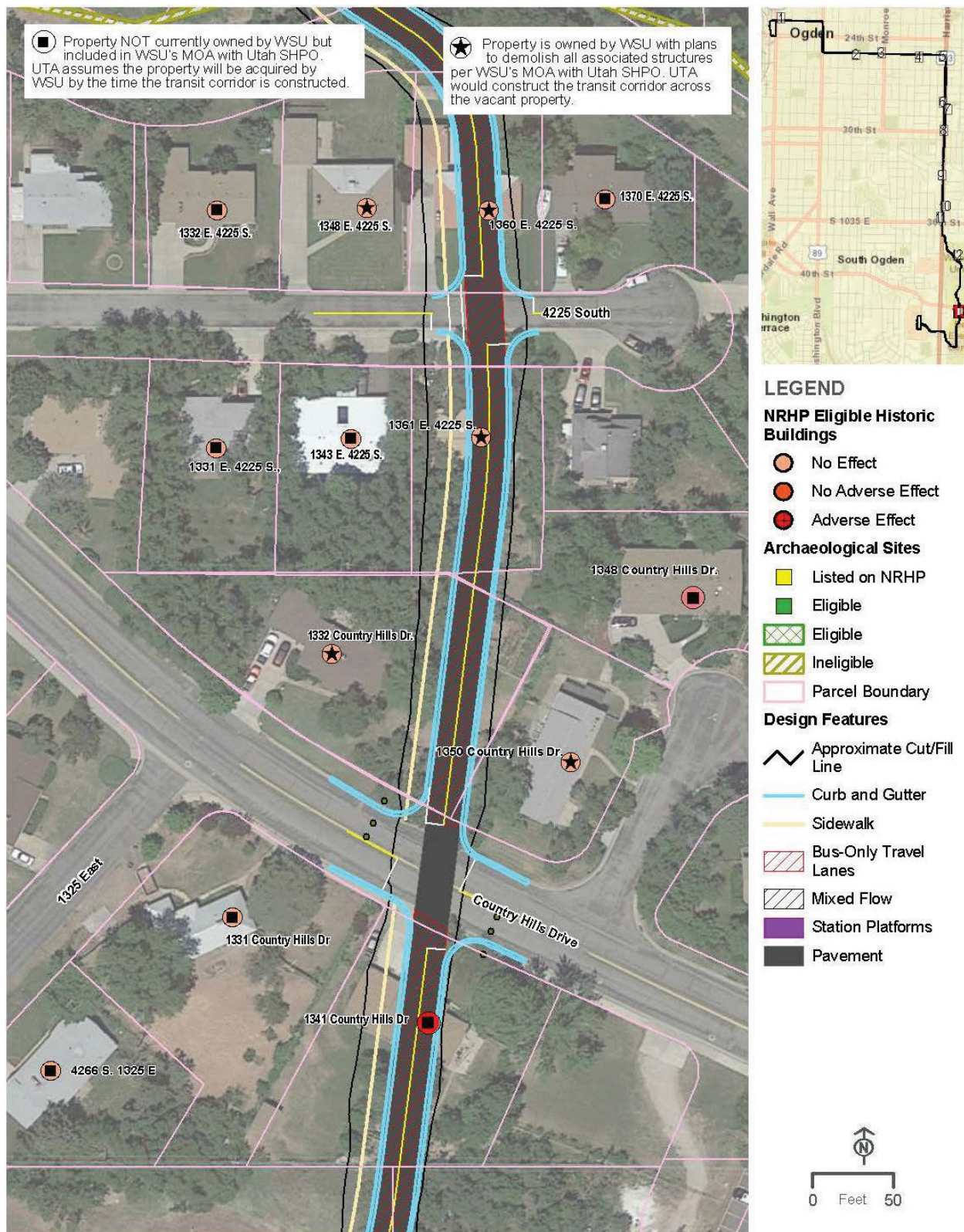
OGDEN/WEBER STATE UNIVERSITY TRANSIT PROJECT
HISTORIC PROPERTIES (DETAIL)

FIGURE 11 OF 13



OGDEN/WEBER STATE UNIVERSITY TRANSIT PROJECT
HISTORIC PROPERTIES (DETAIL)

FIGURE 12 OF 13





GARY R. HERBERT
Governor

SPENCER J. COX
Lieutenant Governor

Jill Remington Love
Executive Director
Department of
Heritage & Arts



Don Hartley
Director
State Historic Preservation Officer

October 22, 2018

Kevin Osborn
Federal Transit Administration, Region VIII
1961 Stout Street, Suite 13301 | Denver, CO 80294

RE: Ogden/Weber State University Transit Project - Case No. 16-0616/18-2313 Request for Consultation Regarding Determinations of Eligibility and Findings of Effect and Notification of Section 4(f) De Minimis and Use Findings (SHPO Updated Concurrence Letter)

For future correspondence, please reference Case No. 18-2313

Dear Mr. Osborn:

The Utah State Historic Preservation Office received your documentation and request for our comment on the above-referenced undertaking on October 11, 2018.

Based on the information provided to our office, we concur with your new area of potential effect, determinations of eligibility, finding of effect, and that mitigation (see corresponding SHPO Case No. 16-0616) has been completed for this undertaking.

This letter serves as our comment on the determinations you have made within the Section 106 consultation process as specified in §36CFR800. If you have questions, please contact me at (801) 245-7239 or by email at clhansen@utah.gov.

Sincerely,

Christopher Hansen, Preservation Planner & Deputy SHPO
Utah State Historic Preservation Office



Preserving America's Heritage

November 8, 2018

Mr. Kevin Osborn
Transportation Program Specialist
Federal Transit Administration, Region VIII
1961 Stout Street, Suite 13301
Denver, CO 80294

Ref: *Proposed Ogden/Weber State University BRT Transit Project at Weber State University*
City of Ogden, Utah
ACHPConnect Log Number: 13313

Dear Mr. Osborn:

The Advisory Council on Historic Preservation (ACHP) has received your notification and supporting documentation regarding the adverse effects of the referenced undertaking on a property or properties listed or eligible for listing in the National Register of Historic Places. Based upon the information provided, we have concluded that Appendix A, *Criteria for Council Involvement in Reviewing Individual Section 106 Cases*, of our regulations, "Protection of Historic Properties" (36 CFR Part 800), does not apply to this undertaking. Accordingly, we do not believe that our participation in the consultation to resolve adverse effects is needed. However, if we receive a request for participation from the State Historic Preservation Officer (SHPO), Tribal Historic Preservation Officer (THPO), affected Indian tribe, a consulting party, or other party, we may reconsider this decision. Additionally, should circumstances change, and it is determined that our participation is needed to conclude the consultation process, please notify us.

Pursuant to 36 CFR §800.6(b)(1)(iv), you will need to file the final Memorandum of Agreement (MOA), developed in consultation with the Utah State Historic Preservation Officer (SHPO), and any other consulting parties, and related documentation with the ACHP at the conclusion of the consultation process. The filing of the MOA, and supporting documentation with the ACHP is required in order to complete the requirements of Section 106 of the National Historic Preservation Act.

Thank you for providing us with the notification of adverse effect. If you have any questions or require further assistance, please contact Sarah Stokely at (202) 517-0224 or by email at sstokely@achp.gov.

Sincerely,

LaShavio Johnson
Historic Preservation Technician
Office of Federal Agency Programs

ADVISORY COUNCIL ON HISTORIC PRESERVATION

401 F Street NW, Suite 308 • Washington, DC 20001-2637
Phone: 202-517-0200 • Fax: 202-517-6381 • achp@achp.gov • www.achp.gov

Ulrich, Carrie L.

From: Hu, Autumn (NEPA Project Administrator) <ahu@rideuta.com>
Sent: Monday, November 26, 2018 2:30 PM
To: Spoor, Heidi K.
Cc: Ulrich, Carrie L.
Subject: FW: Ogden-Weber BRT 106 Consultation SHPO Concurrence
Attachments: 16-0616 & 18-2313b.pdf

Categories: Ogden Transit Study

From: Osborn, Kevin (FTA)
Sent: Tuesday, November 20, 2018 12:23 PM
To: 'Kirk Huffaker' <kirk@utahheritagefoundation.org>; 'Judith Mitchell' <jmitchell@weber.edu>; 'Richa Wilson' <richavonwilson@gmail.com>
Subject: Ogden-Weber BRT 106 Consultation SHPO Concurrence

Good Afternoon,

I am the assigned FTA planner working with UTA and partners on the Ogden Transit Project. Previously you were contacted by Kristin Kenyon as a consulting party in the Section 106 process for the Ogden-Weber Transit Project. Please see the attached UT SHPO concurrence letter regarding the original request for Consultation Regarding Determinations of Eligibility and Findings of Effect and Notification of Section 4(f) *De Minimis* and Use Findings. Please let me know if you have any questions.

Thank you,

Kevin

Kevin Osborn
Transportation Program Specialist
Federal Transit Administration, Region VIII
1961 Stout Street, Suite 13301 | Denver, CO 80294
T 303.362.2393 | E kevin.osborn@dot.gov | F 303.292.5904